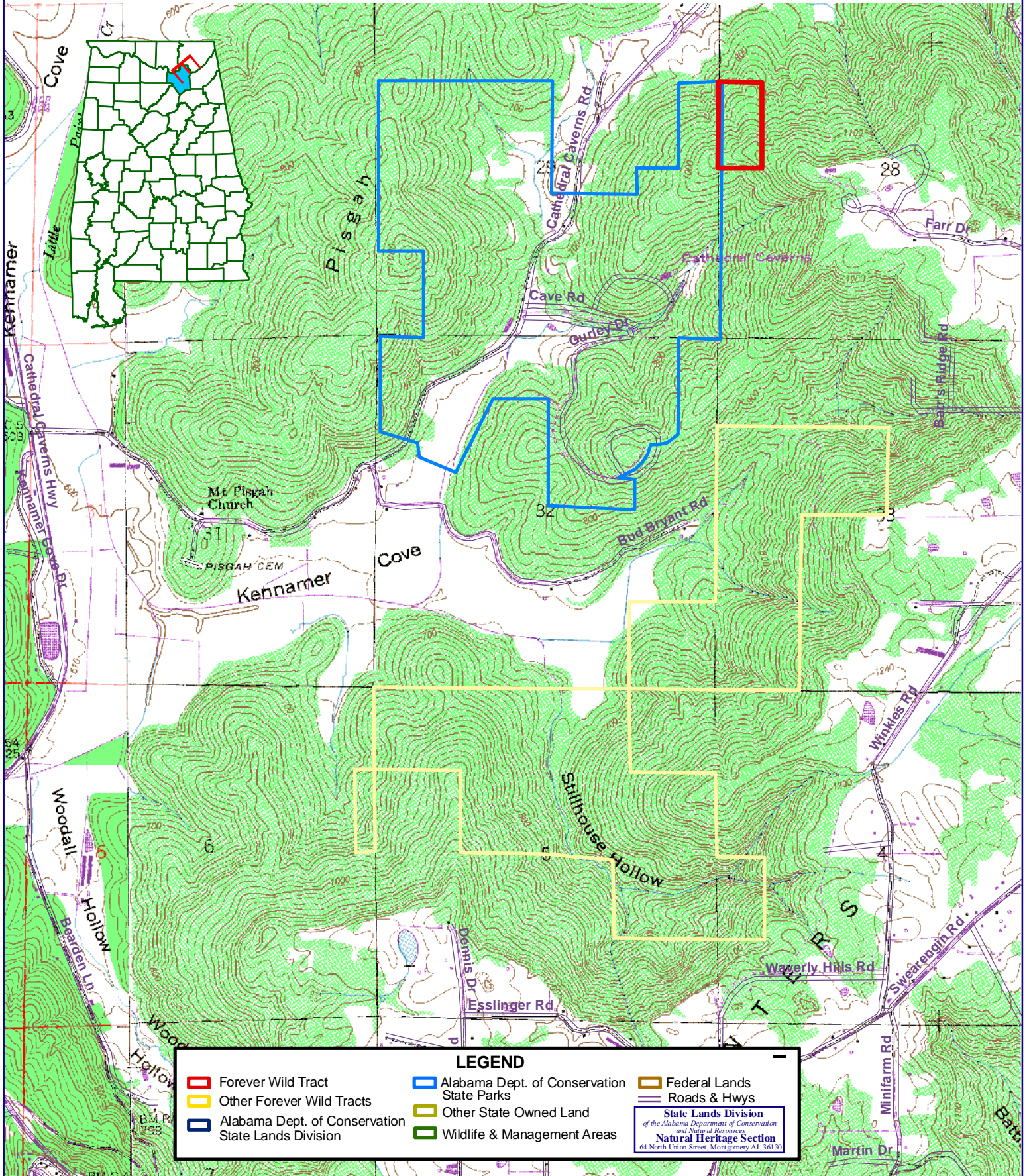


# Forever Wild Program

## Cathedral Caverns-Kirkland Tract Addition

### 40-Acre Nature Preserve Recreation Tract



**LEGEND**

<span style="border: 1px solid red; display: inline-block; width: 15px; height: 10px;"></span> Forever Wild Tract	<span style="border: 1px solid blue; display: inline-block; width: 15px; height: 10px;"></span> Alabama Dept. of Conservation State Parks	<span style="border: 1px solid yellow; display: inline-block; width: 15px; height: 10px;"></span> Federal Lands
<span style="border: 1px solid yellow; display: inline-block; width: 15px; height: 10px;"></span> Other Forever Wild Tracts	<span style="border: 1px solid green; display: inline-block; width: 15px; height: 10px;"></span> Other State Owned Land	Roads & Hwys
<span style="border: 1px solid blue; display: inline-block; width: 15px; height: 10px;"></span> Alabama Dept. of Conservation State Lands Division	<span style="border: 1px solid green; display: inline-block; width: 15px; height: 10px;"></span> Wildlife & Management Areas	<p><b>State Lands Division</b>  of the Alabama Department of Conservation  and Natural Resources  <b>Natural Heritage Section</b>  64 North Union Street, Montgomery AL 36130</p>